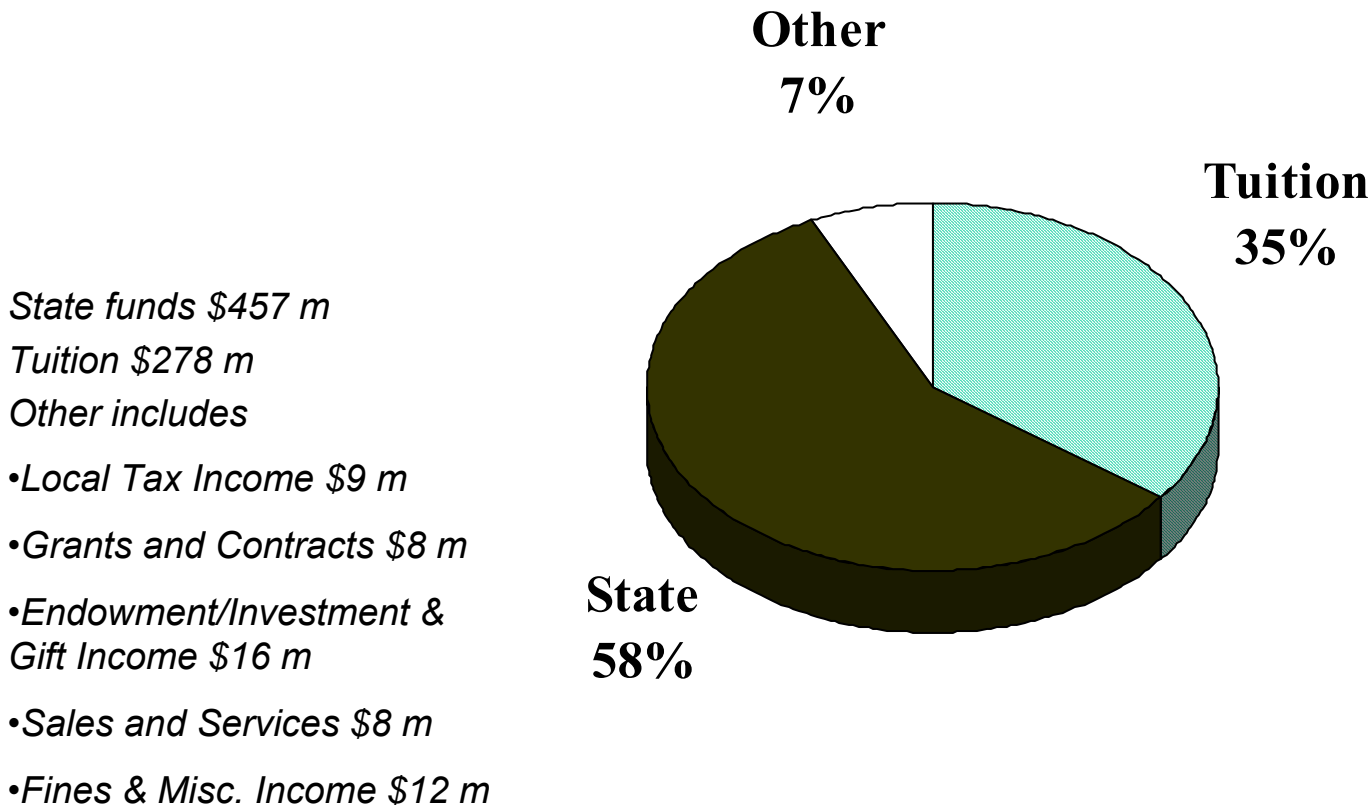


# Higher Education Funding in Arkansas

Prepared for:  
**ALC/Higher Education Subcommittee**  
**Senator Gilbert Baker, Chair**  
**Representative Phillip T. Jacobs, Chair**  
**September 17, 2003**



# Distribution of Unrestricted Educational and General Revenues excluding Non-formula Entities: 2001-2002



Total: \$788 million

**2001-02 Total Grants and Contracts from Federal, State, and Local**

<b>Institutions</b>	<b>Unrestricted</b>	<b>Restricted</b>	<b>Total</b>
ASUJ	\$ 1,009,186	\$ 28,684,975	\$ 29,694,161
ATU	-	9,636,806	9,636,806
HSU	250,071	6,663,091	6,913,162
SAUM	194,239	7,120,942	7,315,181
UAF	4,361,015	41,830,338	46,191,353
UAFS	-	6,239,892	6,239,892
UALR	1,386,910	31,147,246	32,534,155
UAM	-	5,561,365	5,561,365
UAPB	-	22,249,079	22,249,079
UCA	-	12,888,856	12,888,856
<b>4-Year Total</b>	<b>7,201,421</b>	<b>172,022,590</b>	<b>179,224,010</b>
ASUB	\$ 16,139	\$ 1,151,797	\$ 1,167,936
ASUMH	-	607,428	607,428
ASUN	-	548,909	548,909
BRTC	-	2,751,457	2,751,457
CCCUA	-	2,574,652	2,574,652
EACC	-	2,909,409	2,909,409
GCCC	-	3,786,644	3,786,644
MCCC	-	4,736,979	4,736,979
MSCC	-	3,097,411	3,097,411
NAC	87,557	5,064,412	5,151,969
NWACC	-	2,740,432	2,740,432
OTC	21,735	2,086,903	2,108,638
OZC	-	3,012,226	3,012,226
PCCUA	-	4,352,424	4,352,424
PTC	27,094	6,756,807	6,783,901
RMCC	108,444	3,299,447	3,407,891
SACC	23,527	2,460,046	2,483,573
SAUT	-	1,483,976	1,483,976
SEAC	-	3,485,855	3,485,855
UACCB	-	2,190,831	2,190,831
UACCH	43,034	3,112,350	3,155,384
UACCM	14,879	2,446,068	2,460,947
<b>2-Year Total</b>	<b>342,409</b>	<b>64,656,463</b>	<b>64,998,872</b>
<b>Grand Total</b>	<b>\$ 7,543,830</b>	<b>\$ 236,679,053</b>	<b>\$ 244,222,883</b>

## Higher Education Fund Balances

- All of the amount in the fund balance may not be cash in the bank or cash equivalents. The fund balance presented is a snapshot of the balance as of June 30, 2002.
- The fund balance is the value of the excess of assets over liabilities in any fund group or subgroup; it may be equated to commercial equity (NACUBO definition).
- For some institutions a large portion of the Unrestricted Educational and General Fund Balance may be accounts receivable, which is not cash. An institution may appear to have large fund balances and in fact be cash poor.
- Even an institution with a fund balance in excess of \$50 million may, at times, experience serious cash flow problems, i.e., lack of cash during certain periods of the year when state revenues ebb and flow, untimely receipt of federal Pell funds after the institution has paid the student based on the federal notification of the award to the student or untimely receipt of any reimbursements. The cash portion of the fund balance is required for any such occasions.
- To spend it is comparable to spending the cash in your personal savings account, once it's spent it's gone. For an institution, it is fiscally inadvisable to spend fund balances for recurring operating expenses.
- The Auxiliary Fund Balance, in addition to accounts receivable also contains such things as bookstore inventory, vending inventory, and food service/cafeteria inventory. All inventories of goods purchased for resale that are on hand June 30 each year are included in the auxiliary fund balance.
- Historically, a minimum fund balance for four-year institutions has been approximately 15% of the annual operating budget. In Arkansas this minimum is often difficult to achieve without neglecting critical facilities maintenance. However, there are other factors, which may necessitate a larger fund balance. Fund balances should be sufficient to cover:
  - ❖ insurance deductibles for all fleet vehicles and all buildings and facilities.
  - ❖ 10% of the accumulated plant depreciation, providing a reserve for failure of a major system (roof, chillers, sewer, boilers, etc.).
  - ❖ 10% of instructional equipment and computing hardware inventories
  - ❖ 60 - 90 days of contracted salaries and benefits and uncontrollable M&O expenses
- A targeted minimum fund balance for an institution might be determined by using these and other factors pertinent to a specific institution. However, institutions differ in their needs for a fund balance just as they differ in missions and those needs are not determinable by a formula.
- In addition, sufficient fund balances are important to an institution's credit rating, which translates to lower interest rates when the institution must issue bonds.

## Arkansas Higher Education Educational and General Revenue and Fund Balances for 2001-02

Institutions	Unrestricted Educational & General  Current Revenue 2001-02	Unrestricted Educational & General  Fund Balances as a Percent of Revenue	Fund Balances		
			UNRESTRICTED		RESTRICTED
			Educational	Auxiliary	Educational
			Current Fund Balances	Current Fund Balances	Current Fund Balances
Arkansas State University - Jonesboro	\$96,639,143	6.5%	\$6,311,415	\$1,514,349	\$2,625,660
Arkansas Tech University	\$37,588,680	34.2%	\$12,856,359	\$1,470,268	\$48,759
Henderson State University	\$28,395,740	8.6%	\$2,442,617	\$425,669	\$62,718
Southern Arkansas University	\$22,821,384	4.8%	\$1,104,664	\$1,900,643	\$276,417
University of Arkansas at Fayetteville	\$197,351,503	21.9%	\$43,297,855	\$11,936,542	\$13,990,263
University of Arkansas at Ft. Smith	\$27,100,114	8.3%	\$2,255,332	\$717,915	\$1,020,599
University of Arkansas at Little Rock	\$89,701,254	13.9%	\$12,464,319	\$885,027	\$2,702,224
University of Arkansas at Monticello	\$17,902,660	8.7%	\$1,553,865	\$590,544	\$287,142
University of Arkansas at Pine Bluff	\$31,074,687	3.9%	\$1,207,166	-\$135,473	\$3,542,092
University of Central Arkansas	\$73,200,901	8.0%	\$5,826,574	\$1,819,405	\$470,619
<b>Four-Year Total</b>	<b>\$621,776,066</b>	<b>14.4%</b>	<b>\$89,320,166</b>	<b>\$21,124,889</b>	<b>\$25,026,493</b>
Arkansas Northeastern College	\$8,386,812	23.2%	\$1,943,741	\$198,131	\$8,546
Arkansas State University - Beebe	\$13,052,982	20.6%	\$2,690,839	\$152,155	\$60,780
Arkansas State University - Mountain Home	\$5,660,133	20.6%	\$1,163,616	\$187,998	\$229,973
Arkansas State University - Newport	\$4,104,607	14.7%	\$603,816	\$62,712	\$43,494
Black River Technical College	\$8,300,513	110.4%	\$9,167,390	\$335,576	\$1,763
Cossatot Community College of the University of Arkansas	\$4,402,059	14.6%	\$643,692	\$2,996	-\$123,956
East Arkansas Community College	\$7,152,884	17.3%	\$1,235,030	\$716,851	\$4,800
Mid-South Community College	\$5,042,943	36.9%	\$1,862,235	-\$42,628	\$66,917
National Park Community College	\$8,625,567	16.6%	\$1,434,978	\$654,196	\$21,979
North Arkansas College	\$9,709,165	10.5%	\$1,023,865	\$13,423	\$47,940
Northwest Arkansas Community College	\$14,645,390	11.1%	\$1,625,304	\$0	\$173,385
Ouachita Technical College	\$4,420,068	23.9%	\$1,054,706	\$25,625	\$12,131
Ozarka College	\$3,765,650	63.6%	\$2,393,860	\$0	\$0
Phillips Community College of the University of Arkansas	\$12,735,313	17.8%	\$2,265,082	\$198,993	\$3,369,055
Pulaski Technical College	\$13,698,302	25.3%	\$3,461,903	\$0	\$89,717
Rich Mountain Community College	\$4,205,030	76.4%	\$3,212,952	\$148,827	\$4,395
South Arkansas Community College	\$7,477,623	23.7%	\$1,769,008	\$0	\$21,846
Southeast Arkansas College	\$7,305,480	32.8%	\$2,396,985	\$303,892	\$146,741
Southern Arkansas University Tech	\$6,379,812	19.0%	\$1,209,320	\$87,085	\$74,660
University of Arkansas Community College at Batesville	\$5,647,060	28.1%	\$1,587,286	\$155,369	\$1,688
University of Arkansas Community College at Hope	\$6,011,370	15.9%	\$956,546	\$0	\$843
University of Arkansas Community College at Morrilton	\$6,508,115	37.1%	\$2,417,670	\$0	\$117,788
<b>Two-Year Total</b>	<b>\$167,236,878</b>	<b>27.6%</b>	<b>\$46,119,824</b>	<b>\$3,201,201</b>	<b>\$4,374,485</b>
UAMS	\$626,807,655	11.7%	\$73,316,069	\$648,802	\$14,391,770
<b>Total Teaching Campuses</b>	<b>\$1,415,820,599</b>	<b>14.7%</b>	<b>\$208,756,059</b>	<b>\$24,974,892</b>	<b>\$43,792,748</b>



## Arkansas Public Higher Education Institutions SREB and Carnegie Classifications

### FOUR-YEAR INSTITUTIONS

Institution	2002-03 SREB Category	2000 Carnegie Classification
UAF	2	Doctoral/Research Ext
ASUJ	3	Master's I
UALR	3	Doctoral/Research Int
UCA	3	Master's I
ATU	5	Master's I
HSU	5	Master's I
SAUM	5	Master's I
UAFS	2yr - 2	Associate's
UAM	6	Baccalaureate-Gen
UAPB	6	Baccalaureate-Gen

### TWO-YEAR INSTITUTIONS

Institution	2002-03 SREB Category	2000 Carnegie Classification
ASUB	2	Associate's
NWACC	2	Associate's
PTC	2	Associate's
ANC	3	Associate's
ASUMH	3	Associate's
ASUN	3	Associate's
BRTC	3	Associate's
CCCUA	3	Associate's
EACC	3	Associate's
MSCC	3	Associate's
NAC	3	Associate's
NPCC	3	Associate's
OTC	3	Associate's
OZC	3	Associate's
PCCUA	3	Associate's
RMCC	3	Associate's
SACC	3	Associate's
SAUT	3	Associate's
SEAC	3	Associate's
UACCB	3	Associate's
UACCH	3	Associate's
UACCM	3	Associate's

## **SREB Institutional Category Definitions**

Designed for use in making statistical comparisons among states, the SREB system for categorizing postsecondary education institutions is based on a number of factors relevant to determining resource requirements. Institutions are classified based on size (numbers of degrees or full-time-equivalent enrollment), role (types of degrees), breadth of program offerings (number of program areas in which degrees are granted), and comprehensiveness (distribution of degrees across program areas). The SREB classifications do not take into account other factors relevant to determining resource requirements such as cost differences among programs or externally funded research.

Institutions are assigned to categories using data on program completions. To keep the statistical comparison groups relatively stable over time from the previous academic year or for two-year colleges and technical institution or college using data or estimated full-time-equivalent enrollment for the current academic year, an institution changes categories when they meet the criterion for another category for the third consecutive time.

### **Four-Year Universities and Colleges**

- **Four-Year 1** - Institutions awarding at least 100 doctoral degrees that are distributed among at least 10 CIP categories (2-digit classification) with no more than 50 percent in any one category.
- **Four-Year 2** - Institutions awarding at least 30 doctoral degrees that are distributed among at least 5 CIP categories (2-digit classification).
- **Four-Year 3** - Institutions awarding at least 100 master's, education specialist, post-master's, or doctoral degrees with master's, education specialist, and post-master's degrees distributed among at least 10 CIP categories (2-digit classification).
- **Four-Year 4** - Institutions awarding at least 30 master's, education specialist, post-master's, or doctoral degrees with master's, education specialist, and post-master's degrees distributed among at least 5 CIP categories (2-digit classification).
- **Four-Year 5** - Institutions awarding at least 30 master's, education specialist, post-master's or doctoral degrees.
- **Four-Year 6** - Institutions awarding less than 30 master's, education specialist, post-master's or doctoral degrees.

### **Two-Year Colleges**

Two-Year with Bachelor's Institutions awarding primarily associate degrees and offering college transfer courses; some bachelor's degrees may also be awarded.

- **Two-Year 1** - Institutions awarding associate degrees and offering college transfer courses with FTE enrollment of 5,000 or more; some certificates and diplomas may also be awarded.
- **Two-Year 2** - Institutions awarding associate degrees and offering college transfer courses with FTE enrollment of between 2,000 and 4,999; some certificates and diplomas may also be awarded.
- **Two-Year 3** - Institutions awarding associate degrees and offering college transfer courses with FTE enrollment of less than 2,000; some certificates and diplomas may also be awarded.

## Carnegie Category Definitions

The 2000 Carnegie Classification includes all colleges and universities in the United States that are degree-granting and accredited by an agency recognized by the U.S. Secretary of Education. The 2000 edition classifies institutions based on their degree-granting activities from 1995-96 through 1997-98. The next publication will not be available until 2005.

### Doctorate-granting Institutions

- **Doctoral/Research Universities—Extensive:** These institutions typically offer a wide range of baccalaureate programs, and they are committed to graduate education through the doctorate. During the period studied, they awarded 50 or more doctoral degrees per year across at least 15 disciplines.
- **Doctoral/Research Universities—Intensive:** These institutions typically offer a wide range of baccalaureate programs, and they are committed to graduate education through the doctorate. During the period studied, they awarded at least ten doctoral degrees per year across three or more disciplines, or at least 20 doctoral degrees per year overall.

### Master's Colleges and Universities

- **Master's Colleges and Universities I:** These institutions typically offer a wide range of baccalaureate programs, and they are committed to graduate education through the master's degree. During the period studied, they awarded 40 or more master's degrees per year across three or more disciplines.
- **Master's Colleges and Universities II:** These institutions typically offer a wide range of baccalaureate programs, and they are committed to graduate education through the master's degree. During the period studied, they awarded 20 or more master's degrees per year.

### Baccalaureate Colleges

- **Baccalaureate Colleges—Liberal Arts:** These institutions are primarily undergraduate colleges with major emphasis on baccalaureate programs. During the period studied, they awarded at least half of their baccalaureate degrees in liberal arts fields.
- **Baccalaureate Colleges—General:** These institutions are primarily undergraduate colleges with major emphasis on baccalaureate programs. During the period studied, they awarded less than half of their baccalaureate degrees in liberal arts fields.
- **Baccalaureate/Associate's Colleges:** These institutions are undergraduate colleges where the majority of conferrals are below the baccalaureate level (associate's degrees and certificates). During the period studied, bachelor's degrees accounted for at least ten percent of undergraduate awards.

### Associate's Colleges

These institutions offer associate's degree and certificate programs but, with few exceptions, award no baccalaureate degrees. This group includes institutions where, during the period studied, bachelor's degrees represented less than 10 percent of all undergraduate awards.

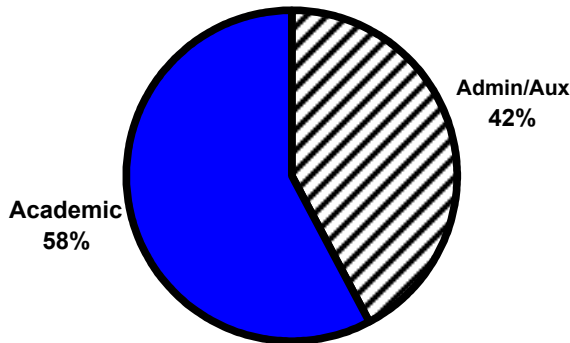


## 2001-02 Paid Positions in Arkansas Higher Education With Comparison to National Staffing Averages

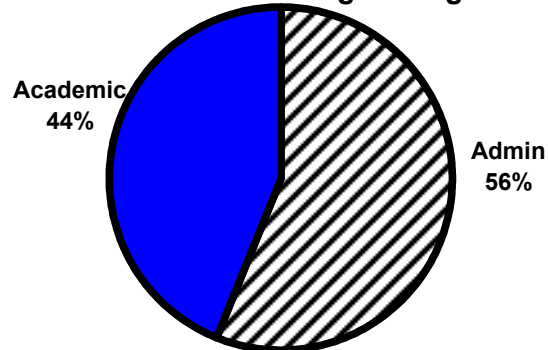
	Admin/Aux	Acad	Total
<b>4-yr Institutions</b>	4,926	5,630	10,556
Arkansas %	<b>47%</b>	<b>53%</b>	100%
National Average	<b>58%</b>	<b>42%</b>	100%
<b>2-yr Institutions</b>	1,437	3,073	4,510
Arkansas %	<b>32%</b>	<b>68%</b>	100%
National Average	<b>42%</b>	<b>58%</b>	100%
<b>4-yr &amp; 2-yr Inst Total</b>	6,363	8,703	15,066
Arkansas %	<b>42%</b>	<b>58%</b>	100%
National Average	<b>56%</b>	<b>44%</b>	100%
<b>Non-Formula Total</b>	4,998	2,410	7,408
<b>Grand Total</b>	11,361	11,113	22,474

Sources: Arkansas Public Higher Ed Personal Services Recommendations 2003-05 Biennium, 12-B and U.S. Department of Education, National Center for Education Statistics, "Fall Staff, 1999"

**Arkansas Four-year & Two-year  
Institutions**



**National Staffing Averages**



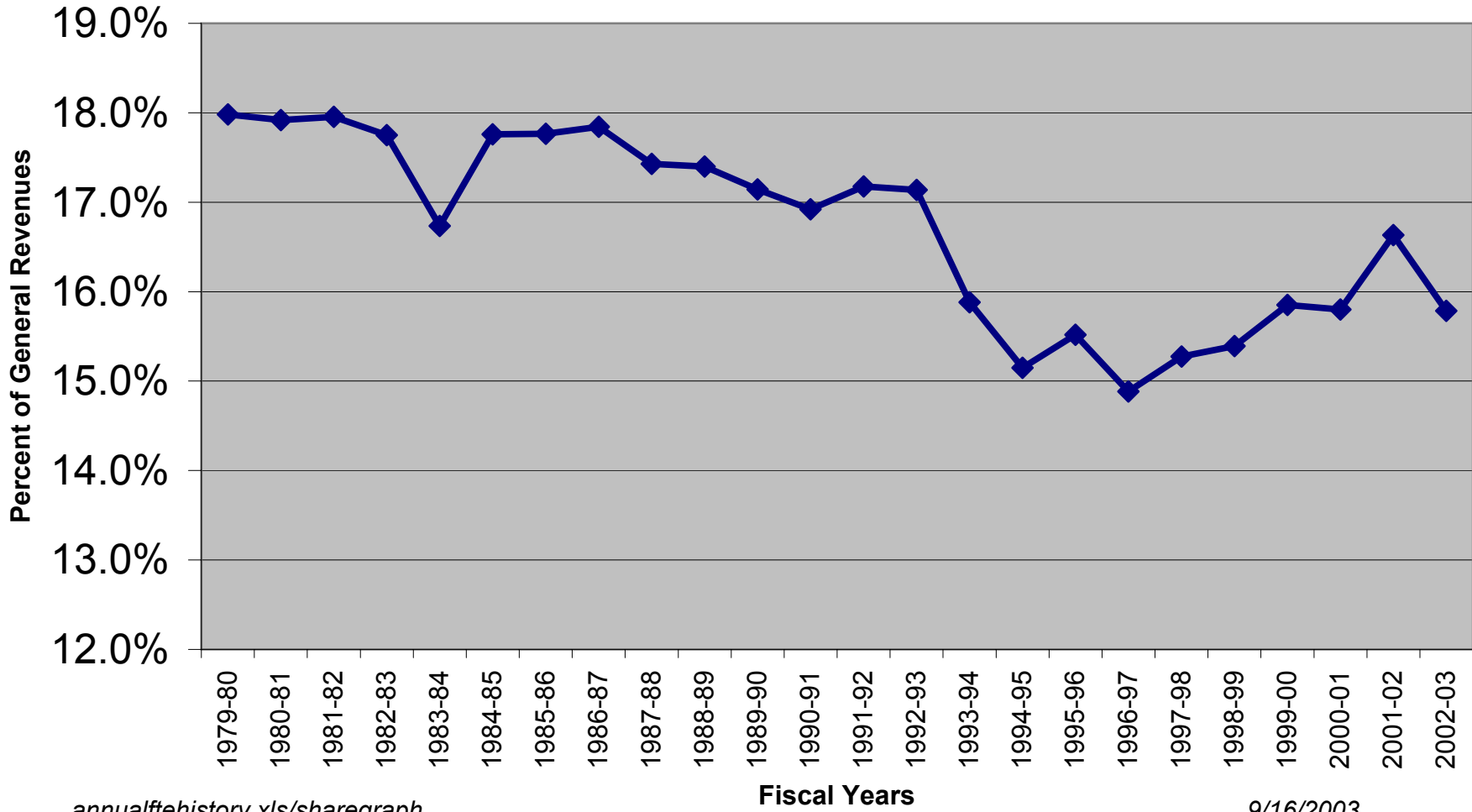
## Examples of Types of Positions for Higher Education Institution Personnel

<b>Academic</b>	<b>Auxiliary</b>	<b>Administrative</b>
<p style="text-align: center;">Includes Non-classified:</p> <p>Department Chairs  Faculty  PT Faculty  Graduate &amp; Research Assts  Librarians  Research Associates</p> <p style="text-align: center;">For Non-Formula</p> <p>Archeologists  Research Scientists</p>	<p style="text-align: center;">Includes Classified and Non-Classified:</p> <p>Housing  <i>eg.</i> Resident Hall Staff  Bookstore (non-contract)  Food-service (non-contract)  <i>eg.</i> Food Service Workers (Baker, Cooks)  Vending Personnel  Athletic Department Staff  <i>eg.</i> Coaches  Athletic Trainers  Equipment Managers</p> <p style="text-align: center;">For Non-Formula</p> <p>Hospital and Patient Care Positions  Pharmacy Positions</p>	<p style="text-align: center;">Includes Classified and Non-classified:</p> <p>Executive Staff  <i>eg.</i> Chancellor/President  Dean  Professional  <i>eg.</i> Controller  Network Manager  Counselors  Paraprofessional  <i>eg.</i> Accountants  Skilled Trades (Electrician, Plumber)  Public Safety Officers  Support Staff  <i>eg.</i> Maintenance Workers  Admin Asst/Secretarial Staff  Custodial Workers</p> <p style="text-align: center;">For Non-Formula</p> <p>County Extension Agents  Archaeological Field Assistants</p>



# Arkansas Higher Education's Share of General Revenues Fiscal 1979/80 to 2002/2003

Source: Annual Revenue Report of Bureau of Legislative Research



## **Response to request for information, Higher Education Subcommittee**

### **Question:**

What coordination is there between the two-year technical schools and programs at the high school level? Is there duplication? How could a professional review of this topic be obtained and who should be involved doing the review?

### **Postsecondary-Secondary Coordination**

Efforts to coordinate programs between two-year technical schools (postsecondary) and high schools (secondary) have been on-going for at least a decade. A number of programs and activities can be cited for which this sort of coordination is paramount:

#### **Tech Prep**

Tech Prep programs involve both secondary and postsecondary institutions in joint efforts to provide students with an articulated, seamless program beginning at the high school and extending through the completion of an Associate of Applied Science (A.A.S.) degree at a postsecondary institution. A primary feature of Tech Prep programs is that students are not required to repeat at the postsecondary institution identical courses they took in high school. A **Tech Prep Consortium** comprised of a number of local high schools and at least one local postsecondary institution conducts Tech Prep programs. The operation of each consortium is set forth in the provisions of an **Articulation Agreement** entered into by all consortium members. Certain courses taken while in high school are acceptable for college credit at the member postsecondary institution, provided these courses are applicable toward the requirements of the A.A.S. degree program the student pursues. These courses are said to have been "articulated"...e.g., their content, delivery, etc., has been examined by a committee representative of both secondary and postsecondary personnel. This committee certifies that the course taught at the high school level (as is, or with prescribed upgrades) is comparable to the same course taught at the postsecondary institution. It is not uncommon that a Tech Prep student may graduate from high school with upwards of 15 semester hours that could be applied toward the requirements of an A.A.S. program at the postsecondary institution. Virtually every two-year postsecondary institution in the state is a member of a Tech Prep consortium and the various consortia are extending the programs to additional high schools each year. The number of Tech Prep consortia in Arkansas greatly increased when Carl D. Perkins funding in support of Tech Prep programs became available in 1990.

#### **High Schools on College Campuses**

More recently, a movement has been underway to establish high schools within the organization of two-year colleges. The federal Office of Vocational and Adult Education (OVAE) is promoting this model through demonstration projects under the Tech Prep provisions of the current federal Carl D. Perkins legislation. Students of these high schools would have at their disposal the full range of

courses, programs, faculty, and facilities of the college. To date, at least three postsecondary institutions in the state have considered applying for such a grant, but to date no applications have been submitted. One such program is currently in operation at the University of Arkansas at Fort Smith, but this was undertaken without a Carl D. Perkins grant.

### **Concurrent Credit**

Students throughout the state are taking courses while in high school which provide that student with credit toward high graduation as well as credit toward a college degree. These courses are offered in a variety of formats. College personnel may teach the course on a high school campus, college courses may be offered on a college campus, courses are offered via distance learning, or qualified high school teachers may teach college courses on a high school campus. Qualified means that the teacher meets the academic credential qualifications a college has for adjunct instructors. Concurrent credit courses are quite popular across the state and almost every higher education institution offers concurrent courses. All the two-year colleges have a significant enrollment of high school students in concurrent courses. Concurrent credit is not to be confused with articulated credit earned via a Tech Prep program. Concurrent credit normally involves dual enrollment at both the high school and the postsecondary institution while Tech Prep articulated credit earned at the high school is usually held in “escrow” until the student enrolls at the postsecondary institution and completes a prescribed number of semester hours credit.

Institutions at both the postsecondary and secondary levels recognize that cooperation is a key to serving the varying needs of today’s students, and thus America’s workforce, and that offering cooperative programs to students is a win-win situation. It would be virtually unimaginable these days that either would pass up an opportunity. Furthermore, postsecondary-secondary cooperation is expected to be a key component (requirement) of the upcoming reauthorization of the Carl D. Perkins Act as well as other federal education legislation.

### **Is there duplication?**

While cooperation between postsecondary and secondary institutions serves a number of ends, all cooperative efforts, regardless of their nature, result in the elimination of duplicate programs offered at postsecondary and secondary institutions.

### **Professional Review of this Topic.**

Should a professional review of this topic be deemed appropriate, it might best be conducted by a task force representative of postsecondary institutions, high schools, the workforce, and recent graduates of postsecondary institutions who participated in a program offered jointly between their high school and a postsecondary institution.

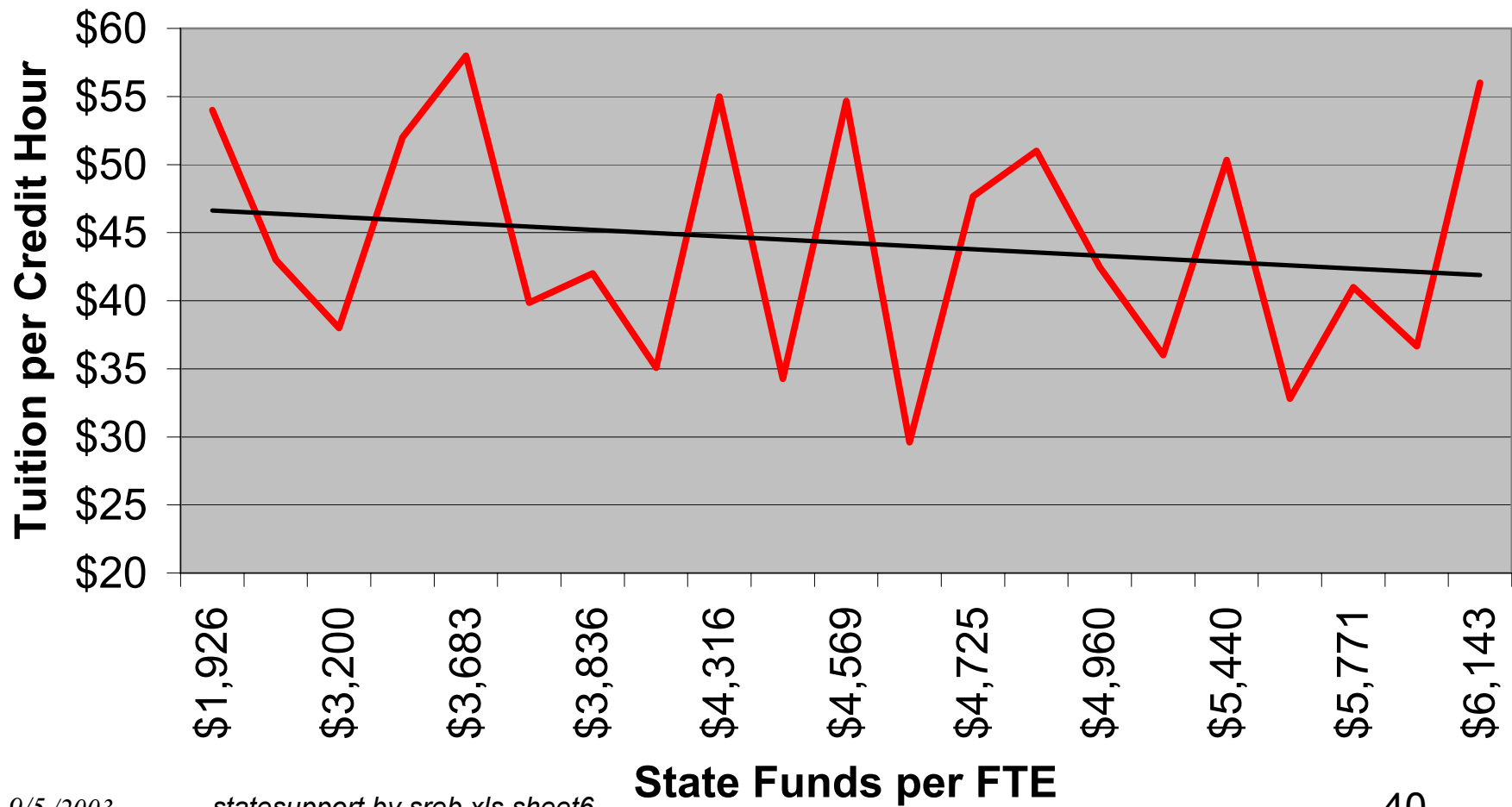
## Arkansas Higher Education Institutions Unrestricted Educational and General Income by Source for 2001-02.

Institutions	Income Sources			Percent State Supported	2001/02 FTE	Local Income Per FTE	State Funding per FTE	Tuition per Credit Hour		Fall 2001 to 2003 Tuition Increases		Annualized Tuition	
	State Funds	Tuition and Fees	Other Local*					2001/02	2003-04	Percent	Dollars	2001/02	2003-04
	A	B	C					I	J = (B+C)/I	K = A/I			
<b>Four-Year Colleges</b>													
University of Arkansas at Fayetteville	\$100,433,366	\$75,569,484	\$21,348,653	50.9%	14,487	\$6,690	\$6,933	\$139	\$159	14.7%	\$20	\$4,158	\$4,768
Arkansas State University	\$53,887,073	\$38,043,610	\$4,708,460	55.2%	9,064	\$4,717	\$5,945	\$142	\$160	12.6%	\$18	\$4,270	\$4,810
University of Arkansas at Little Rock	\$50,705,578	\$34,341,877	\$4,653,799	56.5%	8,667	\$4,499	\$5,850	\$130	\$153	18.1%	\$24	\$3,893	\$4,598
University of Central Arkansas	\$41,704,210	\$29,268,733	\$2,227,958	57.0%	8,130	\$3,874	\$5,130	\$125	\$150	20.5%	\$26	\$3,738	\$4,505
Arkansas Tech University	\$20,868,888	\$15,181,961	\$1,537,831	55.5%	5,324	\$3,140	\$3,920	\$99	\$127	28.8%	\$28	\$2,966	\$3,820
Henderson State University	\$17,421,107	\$10,000,040	\$974,593	59.9%	3,301	\$3,325	\$5,278	\$101	\$128	27.1%	\$27	\$3,029	\$3,851
Southern Arkansas University	\$13,145,259	\$8,325,649	\$1,350,476	56.9%	2,921	\$3,313	\$4,500	\$90	\$118	31.2%	\$28	\$2,706	\$3,550
University of Arkansas at Ft. Smith	\$17,609,678	\$6,838,310	\$2,652,126	65.0%	3,824	\$2,482	\$4,605	\$53	\$74	39.6%	\$21	\$1,590	\$2,220
University of Arkansas at Monticello	\$11,401,081	\$3,210,740	\$3,290,839	60.7%	2,143	\$3,034	\$5,320	\$98	\$113	15.3%	\$15	\$2,935	\$3,385
University of Arkansas at Pine Bluff	\$20,410,485	\$9,874,098	\$790,104	65.7%	3,041	\$3,507	\$6,712	\$107	\$123	14.9%	\$16	\$3,209	\$3,687
<b>Total Four-Year</b>	<b>\$347,586,725</b>	<b>\$230,654,502</b>	<b>\$43,534,839</b>	<b>58.3%</b>	<b>60,902</b>	<b>\$4,502</b>	<b>\$5,707</b>	<b>\$108</b>	<b>\$131</b>	<b>20.6%</b>	<b>\$22</b>	<b>\$3,249</b>	<b>\$3,919</b>
<b>Two-Year Colleges</b>													
Arkansas Northeastern College	\$5,967,101	\$1,853,288	\$566,423	71.1%	1,398	\$1,731	\$4,268	\$35	\$50	41.6%	\$15	\$1,052	\$1,490
Arkansas State University - Beebe	\$8,958,990	\$3,676,735	\$417,257	66.6%	2,076	\$1,972	\$4,316	\$55	\$68	23.6%	\$13	\$1,650	\$2,040
Arkansas State University - Mountain Home	\$3,068,247	\$1,586,145	\$1,005,741	54.2%	833	\$3,112	\$3,683	\$58	\$68	17.2%	\$10	\$1,740	\$2,040
Arkansas State University - Newport	\$2,361,678	\$1,616,712	\$126,217	56.6%	666	\$2,617	\$3,546	\$52	\$65	25.0%	\$13	\$1,560	\$1,950
Black River Technical College	\$5,693,262	\$2,261,686	\$345,565	68.6%	1,205	\$2,164	\$4,725	\$48	\$55	15.4%	\$7	\$1,430	\$1,650
Cossatot Community College of the University of Arkansas	\$3,050,160	\$1,054,417	\$297,482	69.3%	615	\$2,198	\$4,960	\$42	\$45	4.9%	\$2	\$1,274	\$1,336
East Arkansas Community College	\$5,734,269	\$1,294,362	\$124,253	70.3%	1,006	\$1,410	\$5,700	\$33	\$46	40.2%	\$13	\$984	\$1,380
Mid-South Community College	\$3,699,282	\$959,730	\$383,931	70.5%	641	\$2,096	\$5,771	\$41	\$43	4.9%	\$2	\$1,230	\$1,290
National Park Community College	\$6,393,270	\$2,103,312	\$128,985	74.1%	1,465	\$1,524	\$4,364	\$34	\$39	12.6%	\$4	\$1,028	\$1,158
North Arkansas College	\$7,500,942	\$1,943,715	\$264,508	77.3%	1,413	\$1,563	\$5,309	\$36	\$49	36.1%	\$13	\$1,080	\$1,470
Northwest Arkansas Community College	\$6,169,781	\$5,602,416	\$2,873,193	40.1%	2,479	\$3,419	\$2,489	\$43	\$49	14.0%	\$6	\$1,290	\$1,470
Ouachita Technical College	\$3,138,338	\$1,208,893	\$72,837	68.0%	637	\$2,012	\$4,927	\$51	\$59	15.7%	\$8	\$1,530	\$1,770
Ozarka College	\$2,750,285	\$929,145	\$86,220	73.0%	602	\$1,687	\$4,569	\$55	\$66	20.7%	\$11	\$1,640	\$1,980
Phillips Community College of the University of Arkansas	\$8,712,218	\$2,016,651	\$2,006,444	68.4%	1,499	\$2,684	\$5,812	\$37	\$51	38.7%	\$14	\$1,100	\$1,526
Pulaski Technical College	\$7,080,855	\$6,003,430	\$614,017	51.7%	3,677	\$1,800	\$1,926	\$54	\$70	30.2%	\$16	\$1,620	\$2,110
Rich Mountain Community College	\$2,842,067	\$847,000	\$515,963	67.6%	616	\$2,213	\$4,614	\$30	\$40	35.1%	\$10	\$888	\$1,200
South Arkansas Community College	\$5,819,021	\$1,476,121	\$182,481	77.8%	841	\$1,972	\$6,919	\$42	\$60	43.9%	\$18	\$1,258	\$1,810
Southeast Arkansas College	\$4,992,446	\$1,899,799	\$413,235	65.5%	1,560	\$1,483	\$3,200	\$38	\$53	40.4%	\$15	\$1,140	\$1,600
Southern Arkansas University Tech	\$4,773,306	\$1,378,263	\$228,243	74.8%	777	\$2,068	\$6,143	\$56	\$64	14.3%	\$8	\$1,680	\$1,920
University of Arkansas Community College at Batesville	\$3,274,146	\$1,247,719	\$1,125,195	58.0%	862	\$2,753	\$3,798	\$40	\$52	31.3%	\$12	\$1,196	\$1,570
University of Arkansas Community College at Hope	\$4,586,219	\$1,216,837	\$208,314	75.4%	843	\$1,691	\$5,440	\$50	\$57	12.6%	\$6	\$1,510	\$1,700
University of Arkansas Community College at Morrilton	\$3,985,857	\$1,779,657	\$742,601	51.5%	1,039	\$2,428	\$3,836	\$42	\$60	43.7%	\$18	\$1,260	\$1,810
<b>Two-Year Total/Average</b>	<b>\$110,551,740</b>	<b>\$43,956,033</b>	<b>\$12,729,105</b>	<b>64.5%</b>	<b>26,750</b>	<b>\$1,643</b>	<b>\$4,133</b>	<b>\$44</b>	<b>\$55</b>	<b>24.5%</b>	<b>\$11</b>	<b>\$1,325</b>	<b>\$1,649</b>
University of Arkansas for Medical Sciences	\$77,215,182	\$11,245,019	\$538,347,454	12.3%	2,191	\$250,841	\$35,242					\$10,080	
<b>Total/Average All</b>	<b>\$535,353,647</b>	<b>\$285,855,554</b>	<b>\$594,611,398</b>	<b>37.6%</b>	<b>87,652</b>	<b>\$3,261</b>	<b>\$6,108</b>						

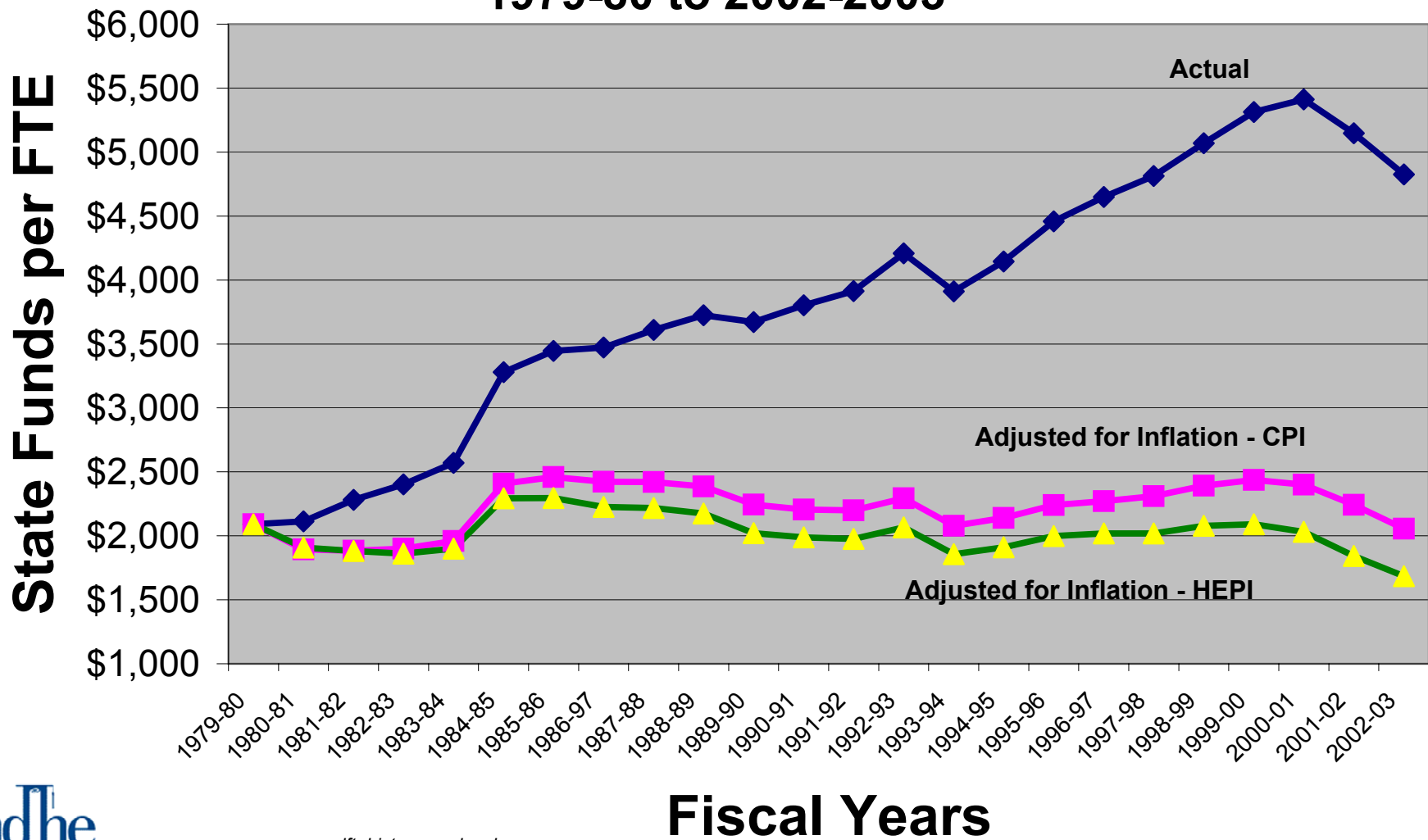
*Other local income includes:*  
*Sales and service of educational departments*  
*Investment income*  
*Sale of parking permits and reserved spaces*  
*Parking fines*  
*Library fines*  
*Graduation Fees*  
*Non-credit course fees*  
*Operating portion of local taxes*  
*Grant indirect cost recovery*  
*Endowment income*  
*Unrestricted Gifts*



## Relationship of State Funds per FTE and Tuition in Two-Year Institutions - Fiscal 2001-02

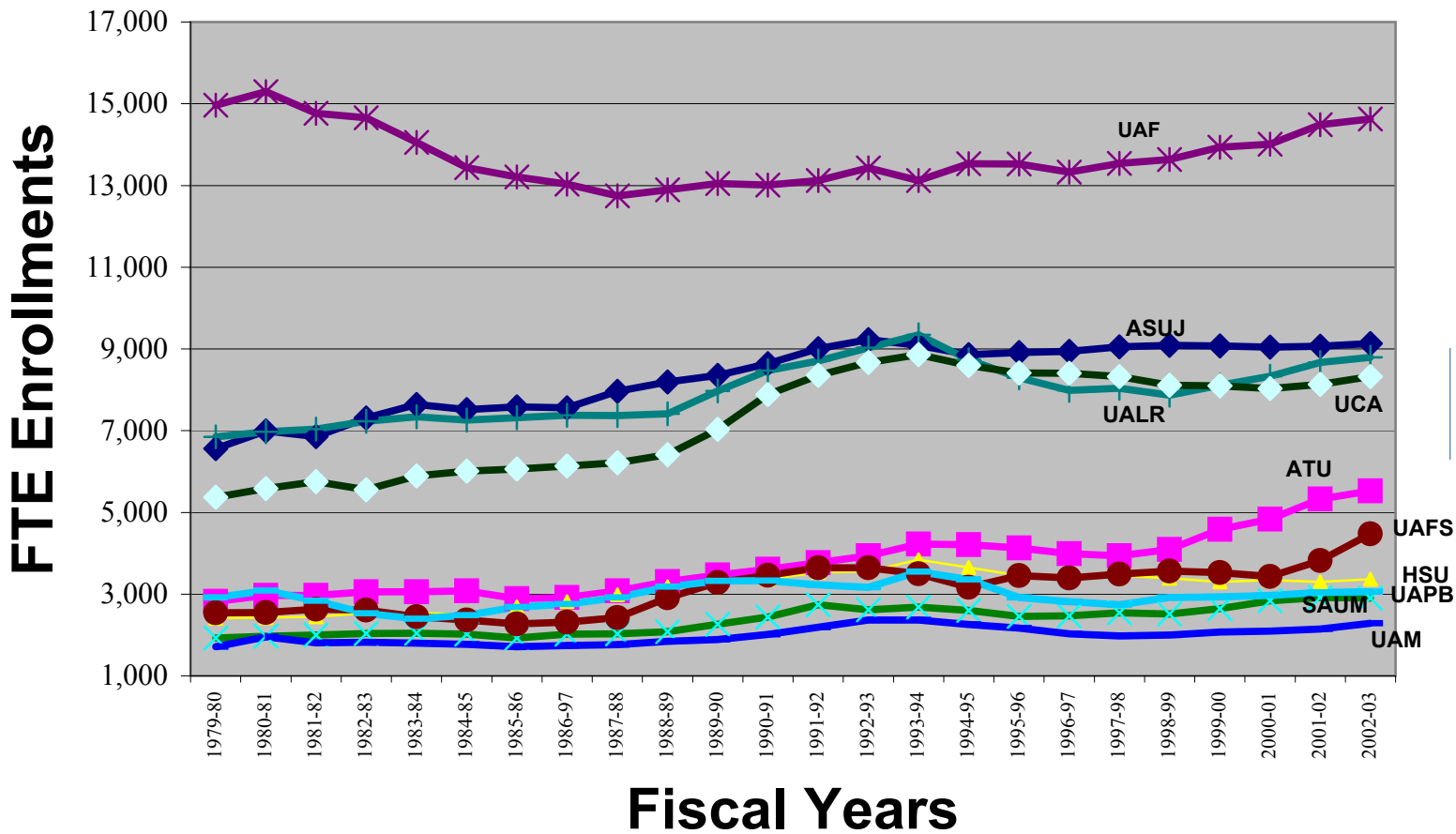


## Average State Funds per FTE Student 1979-80 to 2002-2003





# FTE Enrollments in Arkansas Public Universities 1979-80 to 2002-03



**Arkansas Department of Higher Education  
Survey of Sales Tax/Millage Information**

2003 Update

Institution	Type of Tax (Millage and/or Sales)	Tax Rate (#mills or %)	Amt Collected FY2002-03	Allowable Use for Tax	Date Tax Expires
<b>LOCAL TAXES</b>					
ANC*	Millage	1.2 mills	486,181	No restrictions exist	No Expiration
ASU/Heber Springs	County Sales Tax	0.5%	350,000	Capital and Operating	No Expiration
ASUMH	Millage	1.8 mills	791,258	Capital and Operating	No Expiration
ASUN*	County Sales Tax	0.5%	224,944	Capital and Operating	No Expiration
CCCUA	Howard Cty Sales Tax	0.25%	348,931	Capital or Operating, excluding salary	No Expiration
CCCUA	Sevier Cty Sales Tax	0.25%	303,167	Capital or Operating, excluding salary	No Expiration
EACC	Millage	1.3 mills	253,583	Debt service then operating	No Expiration
MSCC	Millage	4 mills	1,588,927	Capital & operating after debt service obligations	No Expiration
NPCC	Millage	0.8 mills	704,889	No restrictions exist	No Expiration
NWACC*	Millage	2.7 mills	3,808,218	2/3 Operating; 1/3 Debt Retirement	No Expiration
NAC*	Millage	1.7 mills	515,115	Capital & operating after debt service obligations	No Expiration
OZC-Ash Flat	City Sales Tax	0.375%	122,881	Capital and Operating	No Expiration
PCCUA	Millage	1.7 mills	251,235	Operating 100%	No Expiration
Stuttgart/Dewitt	County Sales Tax	0.5%	1,215,549	Operating 100%	No Expiration
RMCC	Millage	1.9 mills	270,680	No restrictions exist	No Expiration
SACC	Millage	0.5 mills	224,237	Capital	No Expiration
UACCB*	County Sales Tax	0.25%	967,502	Capital and Operating	No Expiration
UACCH	Sales Tax	0.25%	571,800	Bonds, Capital & Operating	No Expiration
UACCM	Sales Tax	0.25%	476,489	Capital and Operating	No Expiration
UAFS	County Sales Tax	0.25%	4,323,658	Committed for debt service & capital; no restrictions for operating	Dec-2022
<b>NO LOCAL TAXES</b>					
ASUB	NA				
BRTC	NA				
OTC	NA				
OZC-Melbourne	NA				
PTC	NA				
SAUT	NA				
SEAC	NA				

**\*Notes:**

(ANC) Primarily used for debt service, capital & equipment.

(ASUN) Reflects amount collected for 4 months.

(NWACC) 2/3rds is used for college operations and 1/3 for debt retirement. Board of Trustees may vote to transfer funds. not needed for debt retirement to pay for capital improvement (buildings/equipment) purchases.

(NAC) The millage has always been intended and used for capital type projects - or for debt service of capital type projects. However, with Board approval any uncommitted portion may be used for operations.

Through 2016 about \$270,000 per year is restricted for debt service for an outstanding general obligation bond issue - the proceed of which funded a capital project.

(UACCB) Commitment that no sales tax revenues will be used for salary expenses.

**Educational Excellence Trust Fund 2003-04**

INSTITUTION	Trust Fund (08/13/03)	Percentage of Pie
ASUJ	4,840,473	10.24%
ATU	1,622,559	3.43%
HSU	1,678,461	3.55%
SAUM	992,343	2.10%
UAF	7,350,981	15.56%
UAFS	2,459,417	5.21%
UALR	4,262,463	9.02%
UAM	856,423	1.81%
UAPB	1,486,732	3.15%
UCA	3,693,991	7.82%
<b>4-YR SUBTOTAL</b>	<b>29,243,843</b>	<b>61.89%</b>
ANC	578,924	1.23%
ASUB	1,154,847	2.44%
ASUMH		
ASUN		
BRTC		
CCCUA		
EACC	604,360	1.28%
MSCC		
NPCC	903,906	1.91%
NAC	356,928	0.76%
NWACC	798,820	1.69%
OTC		
OZC		
PCCUA	588,565	1.25%
PTC		
RMCC	159,529	0.34%
SACC	413,339	0.87%
SAUT	162,944	0.34%
SEAC		
UACCB		
UACCH		
UACCM		
<b>2-YR SUBTOTAL</b>	<b>5,722,162</b>	<b>12.11%</b>
ASUJ-MT		
ATU-AVTI		
SAUT-ECC	27,230	0.06%
SAUT-FTA	68,917	0.15%
UA-SYS	211,400	0.45%
UA-Div Agri	4,344,527	9.20%
UA-AS	104,499	0.22%
UA-CJI		
UAM-Forest Echoes		
UAM-Great Rivers		
UAMS	7,339,125	15.53%
UAMS - IC	182,626	0.39%
<b>NON-FORM SUBTOTAL</b>	<b>12,278,324</b>	<b>26.00%</b>
<b>TOTAL</b>	<b>47,244,329</b>	<b>100.00%</b>

Source Act 1305 of 2003

**Arkansas Department of Higher Education  
TOTAL ON-CAMPUS HEADCOUNT BY RACE / ETHNICITY, 2000 - 2002**

INSTITUTION	STUDENT RACE / ETHNICITY FOR FALL TERM --											
	2 0 0 0				2 0 0 1				2 0 0 2			
	Black	White	Other	Total	Black	White	Other	Total	Black	White	Other	Total
<b>Public Four-Year</b>												
ASUJ	1,217 13.0%	7,780 83.4%	330 3.5%	<b>9,327</b>	1,229 13.2%	7,734 83.2%	337 3.6%	<b>9,300</b>	1,275 13.8%	7,611 82.2%	370 4.0%	<b>9,256</b>
ATU	185 3.8%	4,311 89.7%	310 6.5%	<b>4,806</b>	218 4.1%	4,711 89.2%	351 6.6%	<b>5,280</b>	243 4.4%	4,984 89.4%	345 6.2%	<b>5,572</b>
HSU	488 14.2%	2,778 81.0%	164 4.8%	<b>3,430</b>	485 14.1%	2,772 80.9%	171 5.0%	<b>3,428</b>	494 14.3%	2,699 78.4%	251 7.3%	<b>3,444</b>
SAUM	642 21.6%	2,161 72.6%	174 5.8%	<b>2,977</b>	711 23.2%	2,167 70.7%	185 6.0%	<b>3,063</b>	737 24.2%	2,087 68.6%	217 7.1%	<b>3,041</b>
UAF	901 6.0%	12,205 81.7%	1,837 12.3%	<b>14,943</b>	906 5.9%	12,439 81.0%	2,015 13.1%	<b>15,360</b>	931 6.0%	12,518 80.5%	2,100 13.5%	<b>15,549</b>
UAFS	199 3.9%	4,507 88.0%	415 8.1%	<b>5,121</b>	193 3.5%	4,810 87.6%	488 8.9%	<b>5,491</b>	247 4.1%	5,197 86.4%	574 9.5%	<b>6,018</b>
UALR	2,880 27.7%	6,623 63.7%	891 8.6%	<b>10,394</b>	3,161 29.6%	6,629 62.1%	885 8.3%	<b>10,675</b>	3,234 30.2%	6,584 61.5%	881 8.2%	<b>10,699</b>
UAM	505 22.0%	1,724 75.1%	66 2.9%	<b>2,295</b>	520 23.0%	1,684 74.6%	54 2.4%	<b>2,258</b>	588 24.2%	1,780 73.3%	62 2.6%	<b>2,430</b>
UAMS	149 8.0%	1,566 84.4%	140 7.5%	<b>1,855</b>	182 9.4%	1,599 82.6%	155 8.0%	<b>1,936</b>	206 10.2%	1,652 81.9%	159 7.9%	<b>2,017</b>
UAPB	2,795 94.1%	138 4.6%	38 1.3%	<b>2,971</b>	2,911 94.6%	111 3.6%	56 1.8%	<b>3,078</b>	2,959 94.6%	122 3.9%	46 1.5%	<b>3,127</b>
UCA	1,159 13.9%	6,631 79.6%	536 6.4%	<b>8,326</b>	1,227 14.7%	6,482 77.9%	617 7.4%	<b>8,326</b>	1,301 15.4%	6,446 76.5%	682 8.1%	<b>8,429</b>
<b>Four-Year Subtotal</b>	<b>11,120</b> <b>16.7%</b>	<b>50,424</b> <b>75.9%</b>	<b>4,901</b> <b>7.4%</b>	<b>66,445</b>	<b>11,743</b> <b>17.2%</b>	<b>51,138</b> <b>75.0%</b>	<b>5,314</b> <b>7.8%</b>	<b>68,195</b>	<b>12,215</b> <b>17.6%</b>	<b>51,680</b> <b>74.3%</b>	<b>5,687</b> <b>8.2%</b>	<b>69,582</b>
<b>Public Two-Year</b>												
ASUB	96 4.5%	1,991 92.6%	64 3.0%	<b>2,151</b>	97 4.7%	1,896 92.2%	64 3.1%	<b>2,057</b>	112 4.9%	2,088 91.5%	81 3.6%	<b>2,281</b>
ASUMH	3 0.3%	1,121 98.2%	17 1.5%	<b>1,141</b>	4 0.3%	1,208 97.6%	26 2.1%	<b>1,238</b>	3 0.2%	1,213 97.2%	32 2.6%	<b>1,248</b>
ASUN	49 10.2%	409 84.9%	24 5.0%	<b>482</b>	55 9.9%	476 85.9%	23 4.2%	<b>554</b>	93 12.5%	610 82.1%	40 5.4%	<b>743</b>
BRTC	9 0.7%	1,211 98.1%	15 1.2%	<b>1,235</b>	4 0.3%	1,441 98.1%	24 1.6%	<b>1,469</b>	7 0.4%	1,636 98.1%	24 1.4%	<b>1,667</b>
COTC	79 9.7%	673 82.7%	62 7.6%	<b>814</b>	80 9.0%	715 80.3%	95 10.7%	<b>890</b>	96 10.2%	780 82.5%	69 7.3%	<b>945</b>
EACC	474 40.7%	657 56.4%	33 2.8%	<b>1,164</b>	554 45.7%	628 51.8%	31 2.6%	<b>1,213</b>	687 47.9%	720 50.2%	26 1.8%	<b>1,433</b>
GCCC	149 6.7%	1,931 87.0%	139 6.3%	<b>2,219</b>	178 7.3%	2,136 88.2%	108 4.5%	<b>2,422</b>	187 6.3%	2,534 85.1%	258 8.7%	<b>2,979</b>
MCCC	529 26.7%	1,413 71.4%	38 1.9%	<b>1,980</b>	535 29.1%	1,270 69.0%	35 1.9%	<b>1,840</b>	666 33.1%	1,303 64.8%	41 2.0%	<b>2,010</b>
MSCC	476 44.4%	571 53.3%	25 2.3%	<b>1,072</b>	448 44.9%	520 52.2%	29 2.9%	<b>997</b>	551 48.4%	556 48.9%	31 2.7%	<b>1,138</b>
NAC	6 0.3%	1,671 97.4%	38 2.2%	<b>1,715</b>	5 0.3%	1,726 97.2%	44 2.5%	<b>1,775</b>	5 0.3%	1,864 96.9%	55 2.9%	<b>1,924</b>
NWACC	31 0.8%	3,312 88.5%	401 10.7%	<b>3,744</b>	38 1.0%	3,379 86.7%	480 12.3%	<b>3,897</b>	47 1.1%	3,800 86.2%	562 12.7%	<b>4,409</b>
OUTC	123 17.2%	581 81.4%	10 1.4%	<b>714</b>	141 16.6%	687 81.1%	19 2.2%	<b>847</b>	133 12.5%	901 84.7%	30 2.8%	<b>1,064</b>
OZC	2 0.3%	643 97.4%	15 2.3%	<b>660</b>	2 0.3%	660 97.3%	16 2.4%	<b>678</b>	5 0.6%	794 97.2%	18 2.2%	<b>817</b>
PCC/UA	943 40.0%	1,367 58.0%	47 2.0%	<b>2,357</b>	914 40.3%	1,322 58.3%	31 1.4%	<b>2,267</b>	961 42.7%	1,255 55.8%	32 1.4%	<b>2,248</b>
PTC	1,655 38.4%	2,516 58.4%	135 3.1%	<b>4,306</b>	1,836 37.0%	2,931 59.0%	198 4.0%	<b>4,965</b>	2,142 40.1%	2,963 55.4%	243 4.5%	<b>5,348</b>
RMCC	- 0.0%	814 95.7%	37 4.3%	<b>851</b>	1 0.1%	812 94.7%	44 5.1%	<b>857</b>	- 0.0%	915 95.1%	47 4.9%	<b>962</b>

**Arkansas Department of Higher Education**  
**TOTAL ON-CAMPUS HEADCOUNT BY RACE / ETHNICITY, 2000 - 2002**

INSTITUTION	STUDENT RACE / ETHNICITY FOR FALL TERM --											
	2 0 0 0				2 0 0 1				2 0 0 2			
	Black	White	Other	Total	Black	White	Other	Total	Black	White	Other	Total
<b>Public Two-Year</b>												
SACC	266 22.2%	908 75.7%	26 2.2%	<b>1,200</b>	309 27.2%	804 70.8%	22 1.9%	<b>1,135</b>	315 25.5%	892 72.3%	27 2.2%	<b>1,234</b>
SAUT	199 30.5%	443 67.8%	11 1.7%	<b>653</b>	198 30.8%	434 67.5%	11 1.7%	<b>643</b>	220 30.6%	486 67.7%	12 1.7%	<b>718</b>
SEAC	769 39.3%	1,151 58.9%	35 1.8%	<b>1,955</b>	889 41.3%	1,219 56.6%	44 2.0%	<b>2,152</b>	942 42.9%	1,192 54.2%	64 2.9%	<b>2,198</b>
UACCB	30 2.9%	966 94.3%	28 2.7%	<b>1,024</b>	34 2.8%	1,164 94.2%	38 3.1%	<b>1,236</b>	37 2.7%	1,284 94.7%	35 2.6%	<b>1,356</b>
UACCH	280 24.3%	821 71.2%	52 4.5%	<b>1,153</b>	311 27.7%	781 69.5%	31 2.8%	<b>1,123</b>	329 31.3%	695 66.2%	26 2.5%	<b>1,050</b>
UACCM	92 7.8%	1,034 88.2%	46 3.9%	<b>1,172</b>	91 7.1%	1,159 89.8%	40 3.1%	<b>1,290</b>	118 7.9%	1,331 89.3%	41 2.8%	<b>1,490</b>
<b>Two-Year Subtotal</b>	<b>6,260</b> <b>18.5%</b>	<b>26,204</b> <b>77.6%</b>	<b>1,298</b> <b>3.8%</b>	<b>33,762</b>	<b>6,724</b> <b>18.9%</b>	<b>27,368</b> <b>77.0%</b>	<b>1,453</b> <b>4.1%</b>	<b>35,545</b>	<b>7,656</b> <b>19.5%</b>	<b>29,812</b> <b>75.9%</b>	<b>1,794</b> <b>4.6%</b>	<b>39,262</b>
<b>PUBLIC TOTAL</b>	<b>17,380</b> <b>17.3%</b>	<b>76,628</b> <b>76.5%</b>	<b>6,199</b> <b>6.2%</b>	<b>100,207</b>	<b>18,467</b> <b>17.8%</b>	<b>78,506</b> <b>75.7%</b>	<b>6,767</b> <b>6.5%</b>	<b>103,740</b>	<b>19,871</b> <b>18.3%</b>	<b>81,492</b> <b>74.9%</b>	<b>7,481</b> <b>6.9%</b>	<b>108,844</b>

Notes: 'Other' includes students reported as American Indian/Alaskan Native, Asian/Pacific Islander, Hispanic, non-resident alien, and those whose race or ethnicity is unknown.

Percentages are based on institutional total or group subtotal and may not total 100% due to rounding.

UAFS became a four-year institution January 2002.

Source: ADHE 02 Supplement; I:\Enrollment Book Fall 2001\3Race\Enroll-tbl16-TOTAL.xls

**ARKANSAS DEPARTMENT OF HIGHER EDUCATION**  
**Preliminary Opening Fall Enrollment at Arkansas Colleges and Universities**  
**TOTAL STUDENT HEADCOUNT BY INSTITUTION, 1998 - Preliminary 2003\***  
**September 20, 2003**

INSTITUTION	HEADCOUNT FOR FALL TERM --						% Headcount Change 2002 - 2003	% Headcount Change 1998 - 2003
	1998	1999	2000	2001	2002	Preliminary 2003		
<b>Public Four-Year</b>								
ASUJ <sup>1</sup>	10,364	10,461	10,429	10,568	10,435	<b>10,577</b>	1.4%	2.1%
ATU <sup>2</sup>	4,458	4,840	5,172	5,576	5,855	<b>6,264</b>	7.0%	40.5%
HSU	3,685	3,500	3,548	3,465	3,497	<b>3,523</b>	.7%	-4.4%
SAUM	2,712	2,871	3,037	3,127	3,053	<b>3,009</b>	-1.4%	11.0%
UAF	15,010	15,167	15,346	15,752	15,995	<b>16,449</b>	2.8%	9.6%
UAFS <sup>3</sup>	5,629	5,556	5,237	5,673	6,154	<b>6,356</b>	3.3%	12.9%
UALR	10,487	10,764	10,968	11,318	11,491	<b>11,790</b>	2.6%	12.4%
UAM <sup>4</sup>	2,094	2,254	2,306	2,332	2,482	<b>2,878</b>	16.0%	37.4%
UAMS	1,852	1,861	1,855	1,936	2,017	<b>2,563</b>	27.1%	38.4%
UAPB	3,069	3,040	3,042	3,144	3,200	<b>3,228</b>	.9%	5.2%
UCA	8,695	8,739	8,481	8,486	8,553	<b>9,518</b>	11.3%	9.5%
<b>Four-Year Subtotal</b>	<b>68,055</b>	<b>69,053</b>	<b>69,421</b>	<b>71,377</b>	<b>72,732</b>	<b>76,155</b>	<b>4.7%</b>	<b>11.9%</b>
<b>Public Two-Year</b>								
ANC <sup>5</sup>	2,154	1,915	1,980	1,840	2,010	<b>2,067</b>	2.8%	-4.0%
ASUB <sup>6</sup>	2,495	2,656	2,772	2,852	3,132	<b>3,632</b>	16.0%	45.6%
ASUMH	900	1,069	1,141	1,238	1,248	<b>1,348</b>	8.0%	49.8%
ASUN	489	524	552	598	743	<b>1,101</b>	48.2%	125.2%
BRTC	1,169	1,242	1,235	1,469	1,667	<b>1,836</b>	10.1%	57.1%
CCCUA	814	837	814	890	945	<b>1,064</b>	12.6%	30.7%
EACC	2,072	1,158	1,358	1,300	1,572	<b>1,514</b>	-3.7%	-26.9%
MSCC	1,451	1,119	1,072	997	1,138	<b>1,160</b>	1.9%	-20.1%
NAC	1,828	1,816	1,817	1,889	2,012	<b>2,120</b>	5.4%	16.0%
NPCC <sup>7</sup>	2,010	2,184	2,219	2,422	2,987	<b>3,150</b>	5.5%	56.7%
NWACC	3,542	3,923	4,058	4,292	4,731	<b>4,945</b>	4.5%	39.6%
OTC	788	896	829	968	1,255	<b>1,290</b>	2.8%	63.7%
OZC	776	829	797	878	1,004	<b>944</b>	-6.0%	21.6%
PCC/UA	2,521	2,107	2,364	2,267	2,322	<b>2,202</b>	-5.2%	-12.7%
PTC	3,356	4,112	4,306	4,965	5,348	<b>6,128</b>	14.6%	82.6%
RMCC	821	846	964	1,003	1,102	<b>1,128</b>	2.4%	37.4%
SACC	1,203	1,173	1,200	1,135	1,234	<b>1,187</b>	-3.8%	-1.3%
SAUT	837	788	790	896	1,087	<b>1,229</b>	13.1%	46.8%
SEAC	1,687	1,789	1,955	2,152	2,198	<b>2,300</b>	4.6%	36.3%
UACCB	689	994	1,024	1,236	1,356	<b>1,317</b>	-2.9%	91.1%
UACCH	1,327	1,235	1,176	1,137	1,054	<b>1,172</b>	11.2%	-11.7%
UACCM	1,058	1,236	1,172	1,290	1,490	<b>1,508</b>	1.2%	42.5%
<b>Two-Year Subtotal</b>	<b>33,987</b>	<b>34,448</b>	<b>35,595</b>	<b>37,714</b>	<b>41,635</b>	<b>44,342</b>	<b>6.5%</b>	<b>30.5%</b>
<b>PUBLIC TOTAL</b>	<b>102,042</b>	<b>103,501</b>	<b>105,016</b>	<b>109,091</b>	<b>114,367</b>	<b>120,497</b>	<b>5.4%</b>	<b>18.1%</b>

<sup>1</sup> ASUJ merged with Delta Technical Institute in 2001, the workforce education at Marked Tree (ASUTC) is non-credit and not reported to ADHE while general education credit courses and students are reported.

<sup>2</sup> ATU merged with Arkansas Valley Technical Institute effective July 1, 2003

<sup>3</sup> UAFS (previously WC) became a four-year institute in January 2002

<sup>4</sup> UAM merged with Great Rivers Technical Institute and Forest Echoes Technical Institute effective July 1, 2003

<sup>5</sup> ANC (previously MCCC) merged with Cotton Boll Technical Institute effective July 1, 2003

<sup>6</sup> ASUB merged with Foothills Technical Institute effective July 1, 2003

<sup>7</sup> NPCC (previously GCCC) merged with Quapaw Technical Institute effective July 1, 2003

\* Note: Preliminary data based on a self-reported number by the institutions and have not been validated by the Student Information System.